

Foster Care Medical Home Initiative

Care4Kids

- **Pilot** – Foster care medical home model with care coordination supported through Children's Community Health Plan (CCHP) in collaboration with state Medicaid and Dept of Children & Families
 - Eligible upon entry into foster care
 - Can remain for 12 months after reaching permanency
- **Evaluation** – Initial process and clinical outcomes; subsequent social outcomes
- **Payment model** – Capitation

Care4Kids Goals



Key Components







Health care coordination is key

- Begins at the initial screening exam
- Each child assigned a health care coordination team:
 - Health Care Coordinator – RN or Master's level/APSW
 - Outreach Coordinator - Bachelor's minimum with case management experience
- Child can go to any in-network medical home provider for primary care
 - "Centers of Excellence" are encouraged
- Comprehensive Healthcare Plan

National Comparisons

2014 HEDIS Measures



NCQA HEDIS Measures	National Medicaid Average	Care4Kids
Childhood Immunizations	74.12%	87.44% 
Immunizations for Adolescents	52.17%	93.51% 
Lead Screening for Children	66.25%	84.30% 
Dental	49.02	74.0% 
30 Day Follow-Up After Mental Health Hospitalization	63.84%	80.65% 
ED Utilization* – ED Visits per 1,000 member months	61.99	54.24 

Source: 2014 National Center for Quality Assurance HEDIS Data (Healthcare Effectiveness Data and Information Set)

One approach to reducing disparities

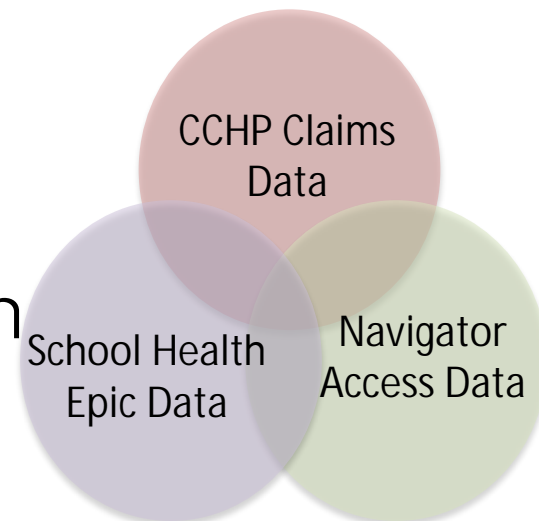
Community Engagement Initiative

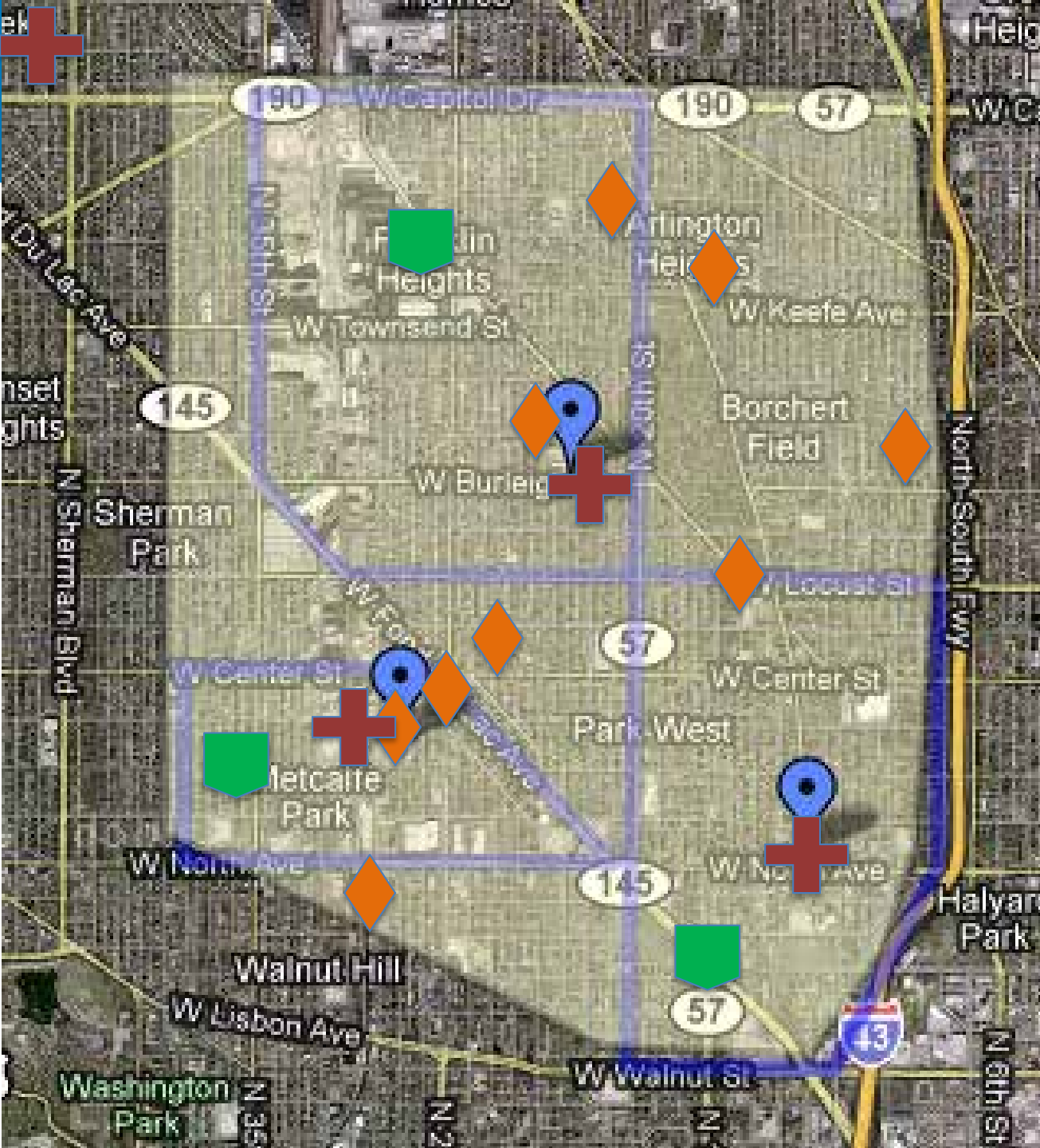
Community Engagement

- **Pilot** – Use of integrated system resources to build capacity among communities and improve health
- **Evaluation** – Health and social outcomes
 - Asthma, oral health, mental health, school attendance

Sources – CCHP claims data, school nurse Epic data, community health navigator data

Proposed payment model – Capitation





Community Partner Sites

COA Goldin Center
 Next Door Foundation
 YMCA, Northside



School Nurse Sites

Ben Franklin
 Keefe Ave
 Auer Ave
 LaFollette
 Hopkins/Lloyd
 Clarke St
 Next Door
 Starms
 Gwen T. Jackson



CHW Clinic sites

COA Goldin center; *family care*
 Next Door Primary Care & Dental
 Children's Dental Practice
 YMCA Northside; *family care*
 Midtown Clinic: primary care and dental



Community Health Navigators

Amani- Christopher Morgan
 Metcalfe Park- Bregetta Wilson
 Lindsay Heights- Robert Walker
 Supervisor- Gabe Doyle

Amani Community Partnership



MILWAUKEE · WISCONSIN
JOURNAL SENTINEL

UNIVERSITY OF WISCONSIN
MILWAUKEE | LUBAR SCHOOL OF BUSINESS
INFO SESSIONS | LEARN MORE
"RISE TO THE OCCASION"

News Watchdog Opinion Sports Business Food Entertainment Lifestyle Multimedia

Milwaukee County

Home » News » Milwaukee County

Determined residents put Amani neighborhood on new path



Gary Porter / for the Journal Sentinel

Basketball is just one of the activities for kids during "Family Fun Night" at COA's Goldin Center in the Amani neighborhood. The event includes games, a resource fair and food. A new early childhood education center is expected to

MILWAUKEE
NEIGHBORHOOD NEWS SERVICE
Milwaukee Press Club Award Winner 2014

Communities
Select a Neighborhood

Subscribe to NNS

Amani neighborhood credits drop in crime to 'comprehensive community effort'

FEBRUARY 11, 2015 BY BRENDAN O'BRIEN — 3 COMMENTS

Sign up for the NNS daily email:

Sign up



Promising Early Results

Integration of care team

- Navigator referrals
 - School nurses
 - Primary care
 - Specialists

Condition management

- More use of preventive healthcare in schools with school nurses
 - Frequency of primary care visits for asthma management
 - Filling of preventive asthma medications

School Impacts

- Return to class rates consistent with published rates

Populations defined by clinical condition

Failure to thrive