

*Aligning for Action*

# LAN SUMMIT

Health Care Payment Learning & Action Network

## **Supporting Provider Performance in Alternative Payment Models**

Enhance your Summit experience with...



Log in at:

**[glsr.it/lansummit](https://glsr.it/lansummit)**

Wi-Fi password: *Summit*

# Welcome



**Craig Samitt (Anthem)**

*Executive Vice President  
and Chief Clinical Officer*

# Today's Panel



**Jim Walleshauser**

*President,  
Independent Health*



**Farzad Mostashari**

*Co-Founder and Chief Executive  
Officer, Aledade*



**Travis Broome**

*Assistant Medical Director,  
Highgate Medical Group*

# LAN Resources

<https://hcp-lan.org/resources/>



# Exit Survey

We want to know what you think!

---

Please take a moment to complete the exit survey so we can continue to improve and enrich the LAN.

<https://www.surveymonkey.com/r/lansummitsession>



# Contact Us

We want to hear from you!



[www.hcp-lan.org](http://www.hcp-lan.org)



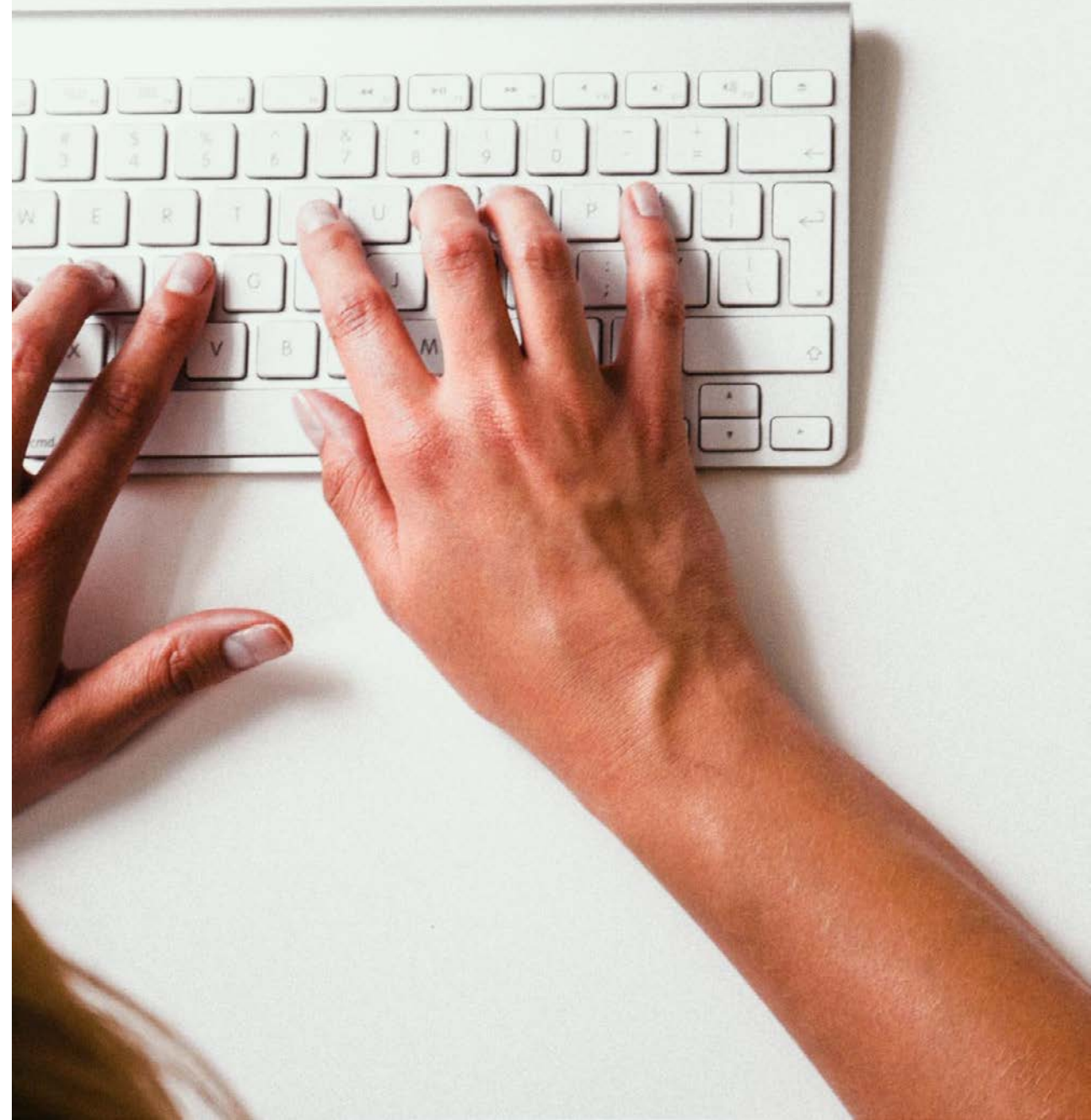
[@Payment\\_Network](https://twitter.com/Payment_Network)



[PaymentNetwork@mitre.org](mailto:PaymentNetwork@mitre.org)



Search: Health Care Payment  
Learning and Action Network



*Aligning for Action*



**LAN SUMMIT**

Health Care Payment Learning & Action Network