

Aligning for Action

LAN SUMMIT

Health Care Payment Learning & Action Network

Succeeding with Population- Based Payment for Rural Healthcare

Enhance your Summit experience with...



Log in at:

glsr.it/lansummit

Wi-Fi password: *Summit*

Welcome



**Dianne Hasselman
(NAMD)**

*Deputy Executive Director
for NAMD*

Today's Panel



Jon Griffin

*Medical Director at Blue Cross
Blue Shield of Montana*



Maeve McClellan

*Director of Practice
Transformation for NRACC*



Travis Broome

*Leads Aledade's policy efforts
in both Medicare and the
commercial space*

LAN Resources

<https://hcp-lan.org/resources/>



Exit Survey

We want to know what you think!

Please take a moment to complete the exit survey so we can continue to improve and enrich the LAN.

<https://www.surveymonkey.com/r/lansummitsession>



Contact Us

We want to hear from you!



www.hcp-lan.org



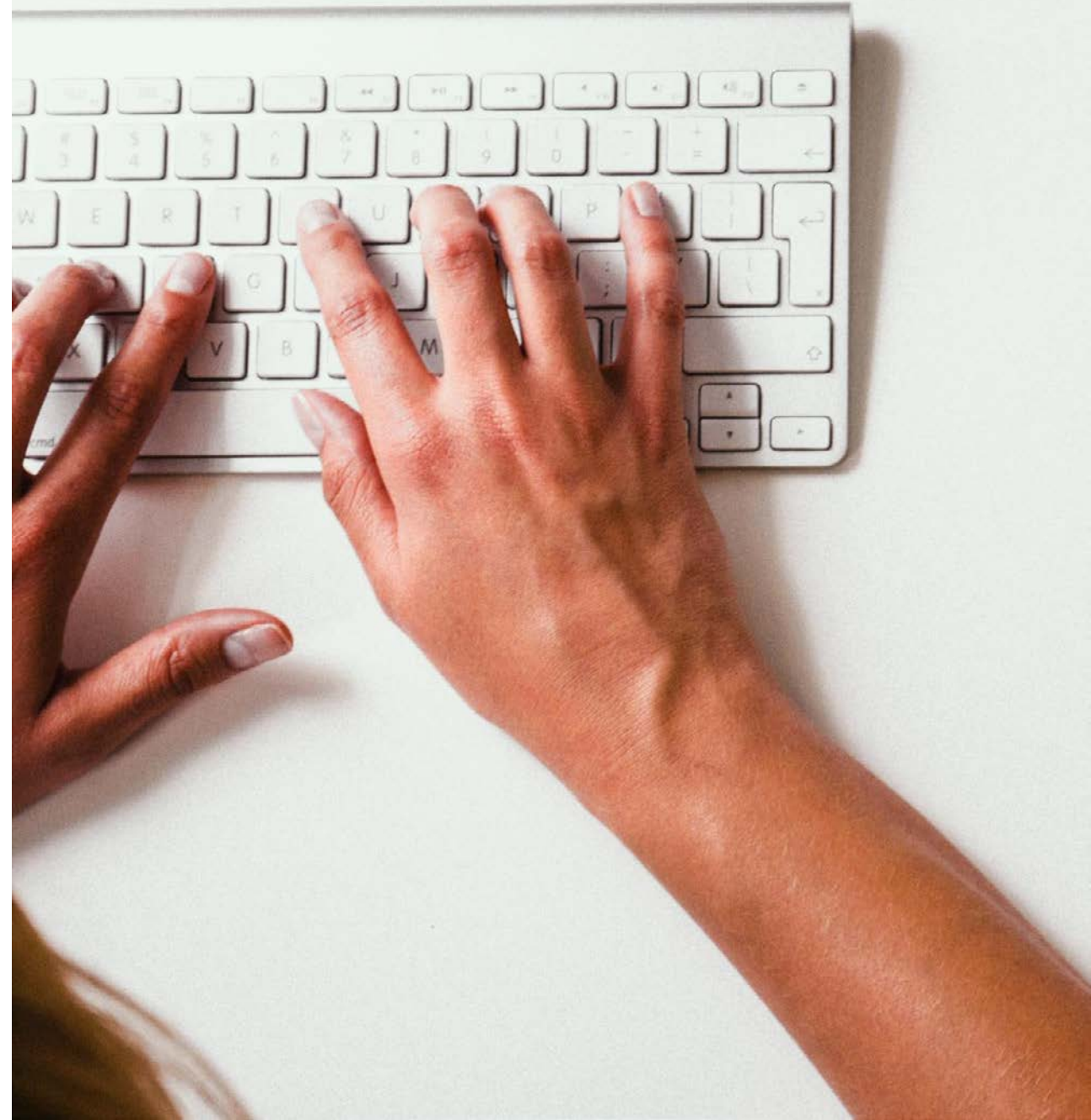
[@Payment_Network](https://twitter.com/Payment_Network)



PaymentNetwork@mitre.org



Search: Health Care Payment
Learning and Action Network



Aligning for Action



LAN SUMMIT

Health Care Payment Learning & Action Network