

*Aligning for Action*

# LAN SUMMIT

Health Care Payment Learning & Action Network

## **The Role of Evidence in Accelerating Payment Reform**

Enhance your Summit experience with...



Log in at:

**[glsr.it/lansummit](https://glsr.it/lansummit)**

Wi-Fi password: *Summit*

# Welcome



## **Nadia Adams**

*Center for Health Innovation  
and Implementation Science at  
Indiana University School of  
Medicine and Indiana CTSI*

# Today's Panel



**David Muhlestein**

*Senior Director of Research and  
Development, Leavitt Partners, LLC*



**Renee McLaughlin**

*Senior Medical Director,  
Cigna*

# LAN Resources

<https://hcp-lan.org/resources/>



# Exit Survey

We want to know what you think!

---

Please take a moment to complete the exit survey so we can continue to improve and enrich the LAN.

<https://www.surveymonkey.com/r/lansummitsession>



# Contact Us

We want to hear from you!



[www.hcp-lan.org](http://www.hcp-lan.org)



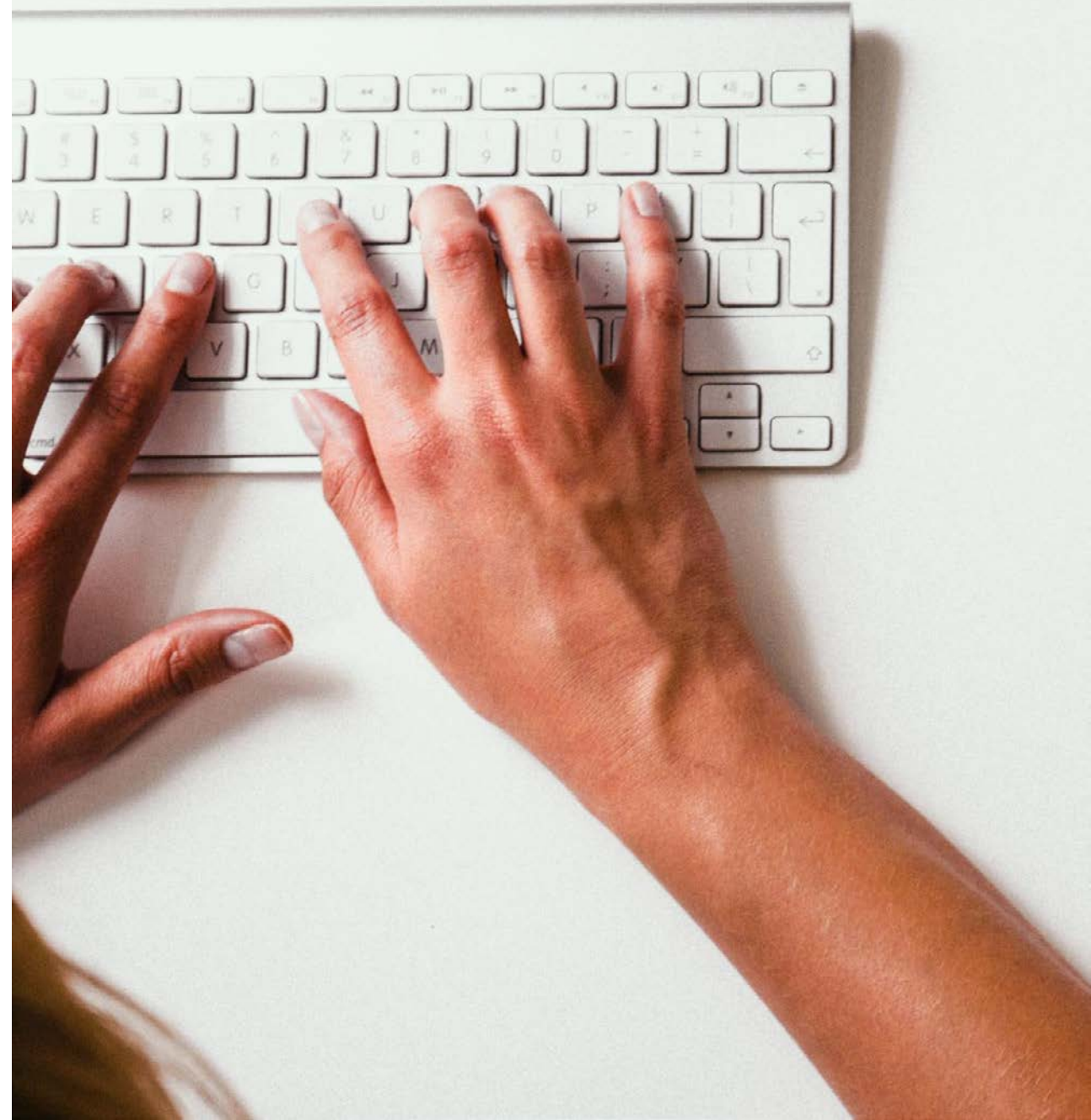
[@Payment\\_Network](https://twitter.com/Payment_Network)



[PaymentNetwork@mitre.org](mailto:PaymentNetwork@mitre.org)



Search: Health Care Payment  
Learning and Action Network



*Aligning for Action*



**LAN SUMMIT**

Health Care Payment Learning & Action Network