



Aligning for Action

LAN SUMMIT

Health Care Payment Learning & Action Network

CMMI Update

Enhance your Summit experience with...



Log in at:

glsr.it/lansummit

Wi-Fi password: *Summit*

Today's Panel



Arrah Tabe-Bedward

Deputy Director, Center for Medicare & Medicaid Innovation



Amy Bassano

Acting Deputy Administrator for Innovation and Quality & Acting Director of the Center for Medicare and Medicaid Innovation (CMMI) at the Centers for Medicare and Medicaid Services

New Direction - CMS Innovation Center Request for Information (RFI)

The RFI seeks broad input related to a new direction for the CMS Innovation Center that will promote **patient-centered care** and **test market-driven reforms** that empower beneficiaries as consumers, provide price transparency, increase choices and competition to drive quality, and improve outcomes.

The administration plans to launch models in several focus areas:

- Expanded Opportunities for Participation in Advanced APMs
- Consumer-Directed Care & Market-Based Innovation Models
- Physician Specialty Models
 - Physician-Focused Payment Model Technical Advisory Committee (PTAC) Recommended Models
- Prescription Drug Models
- Medicare Advantage (MA) Innovation Models
- State-Based and Local Innovation, including Medicaid-focused Models
- Mental and Behavioral Health Models
- Program Integrity

Guiding Principles

- Choice and competition in the marketplace
- Provider choice and incentives
- Patient-centered care
- Benefit design and price transparency
- Transparent model design and evaluation
- Small scale testing

Submit
feedback @ innovation.cms.gov/initiatives/direction/ through **November 20, 2017**
& ideas

LAN Resources

<https://hcp-lan.org/resources/>



Exit Survey

We want to know what you think!

Please take a moment to complete the exit survey so we can continue to improve and enrich the LAN.

<https://www.surveymonkey.com/r/lansummitsession>



Contact Us

We want to hear from you!



www.hcp-lan.org



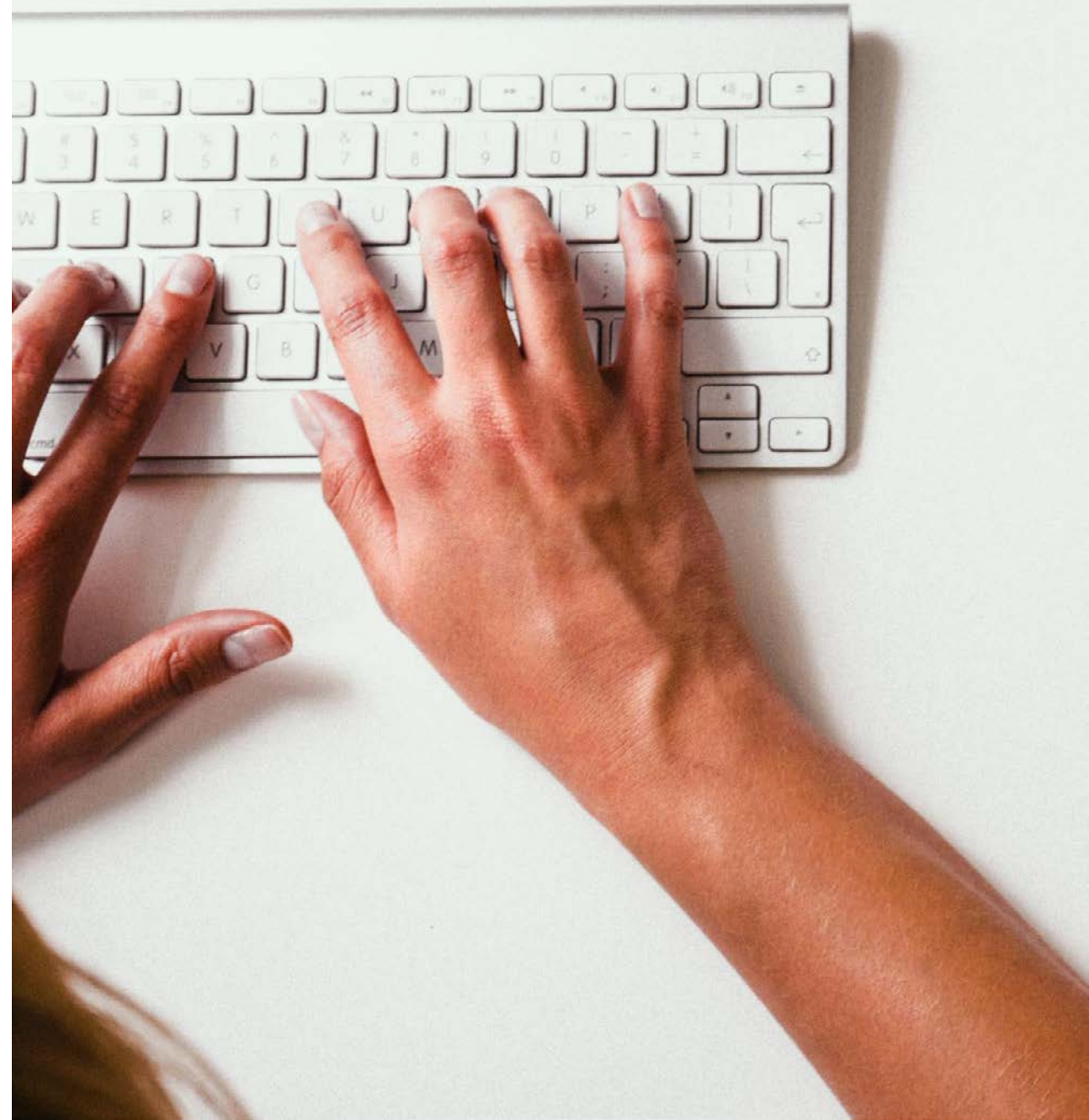
[@Payment_Network](https://twitter.com/Payment_Network)



PaymentNetwork@mitre.org



Search: Health Care Payment
Learning and Action Network



Aligning for Action



LAN SUMMIT

Health Care Payment Learning & Action Network