

Aligning for Action

LAN SUMMIT

Health Care Payment Learning & Action Network

How to Drive Higher Value Through Equity-Focused Quality Improvement

Enhance your Summit experience with...



Log in at:

glsr.it/lansummit

Wi-Fi password: *Summit*

Welcome



Madeleine Shea
(CMS) Deputy
Director,
Office of Minority
Health at the
Centers for
Medicare and
Medicaid Services



Mike Currie
(United
Healthcare)
Director of
Health
Equity Services



Kevin Bowman
(Anthem)
Staff VP,
Enterprise
Clinical Quality

How to Drive Higher Value Through Equity-Focused Quality Improvement

2017 LAN Fall Summit: *Aligning for Action*, October 30, 2017

Our Company

UNITEDHEALTH GROUP



HEALTH BENEFITS

260K
employees
worldwide

←
**Complementary but
Distinct Business
Platforms**
→



HEALTH SERVICES

**50 states &
125+ countries**
in benefit & services
footprint

50M members
in UnitedHealthcare
products

MISSION

Helping people live healthier lives and helping to make the health system work better for everyone.

.....

VISION

To make a meaningful difference in the overall well-being of our members and society by empowering consumers and providers to make better decisions about their medical, social and financial health.

.....

HOW WE DELIVER

Create the most trusting, enduring connections between consumers, care providers, and our employees to achieve the best health outcomes, cost of care and experience.

Our Approach to Health Equity

Our Health Equity Services Program focuses on:

- Collecting data to understand member cultural characteristics
- Finding gaps in our members' health to provide better programs
- Improving how we work with members based on their demographics
- Working with many different cultures to improve all members' experiences



Rich data and analytics



Scalable approaches



Integration of equity into care management programs

Putting it All Together



LAN Resources

<https://hcp-lan.org/resources/>



Exit Survey

We want to know what you think!

Please take a moment to complete the exit survey so we can continue to improve and enrich the LAN.

<https://www.surveymonkey.com/r/lansummitsession>



Contact Us

We want to hear from you!



www.hcp-lan.org



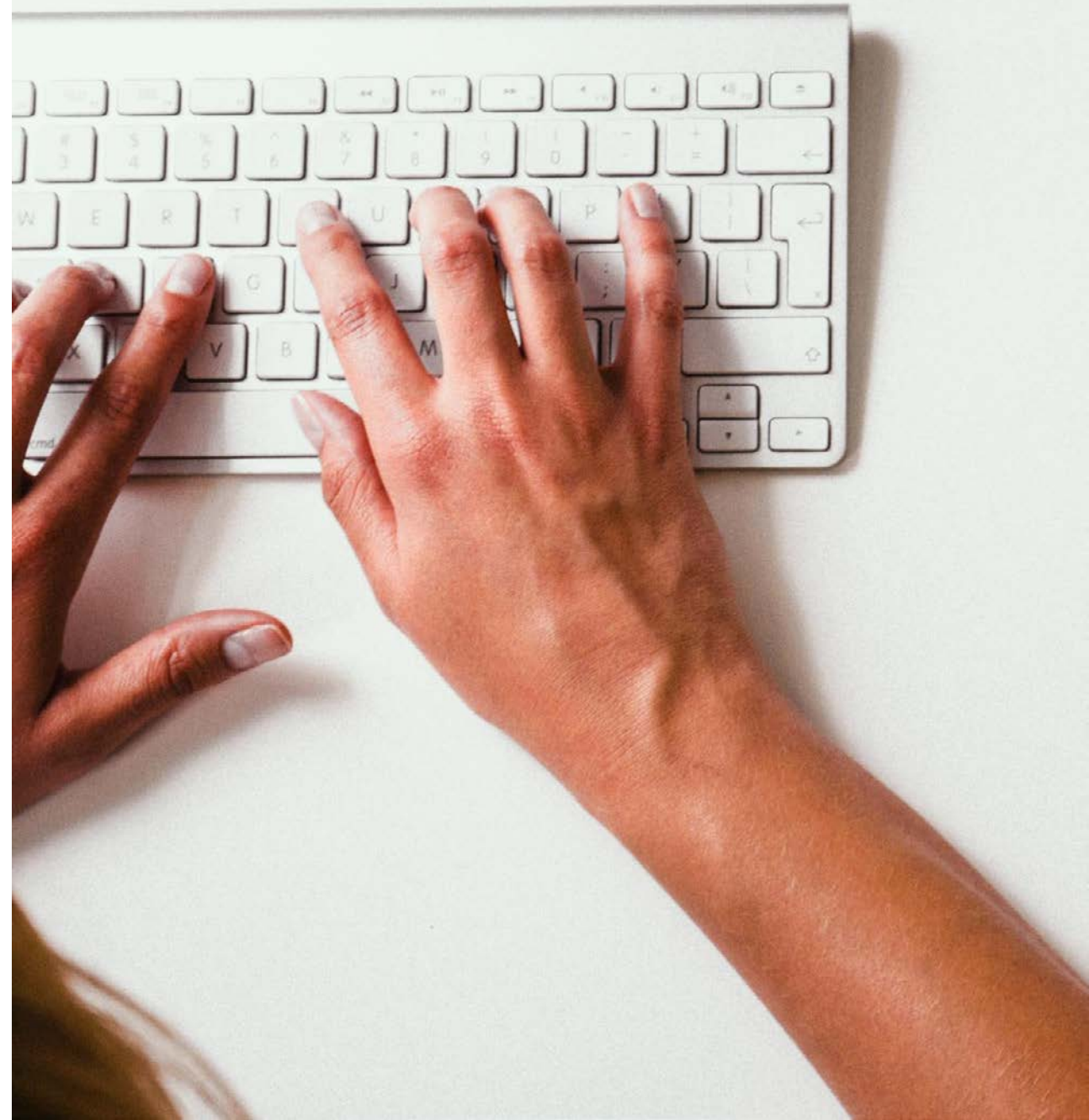
[@Payment_Network](https://twitter.com/Payment_Network)



PaymentNetwork@mitre.org



Search: Health Care Payment
Learning and Action Network



Aligning for Action



LAN SUMMIT

Health Care Payment Learning & Action Network